



# EU HEALTHY GATEWAYS

Joint Action 04-2017 / Grant Agreement Number: 801493

## **Actions for preparedness at Points of Entry (ground crossings, airports, ports)**

The general objective of this action is **to improve capacities at points of entry (PoE) including ports, airports and ground crossings, in preventing and combating cross-border health threats from the transport sector.**

The EU HEALTHY GATEWAYS is a European Joint Action funded by the European Commission under the third Health Programme (2014-2020). The duration of the EU HEALTHY GATEWAYS Joint Action is 48 months (May 2018 - April 2022).





Co-funded by  
the Health Programme  
of the European Union

# EU HEALTHY GATEWAYS Joint Action

**PREPAREDNESS AND ACTION AT POINTS OF ENTRY  
(PORTS, AIRPORTS, GROUND CROSSINGS)  
GRANT AGREEMENT NUMBER: 801493**

.....

## **D2.2 Final Layman Report (April 2022)**

**Work Package 2: Dissemination**

**Work Package Leader: National Institute of Public Health (NIJZ), Slovenia**

**With support from: University of Thessaly (UTH), Greece**

**This report was funded by the European Union's Health Programme (2014-2020).**

## FURTHER INFORMATION

For further information about the Joint Action's activities, results, publications and implementation please visit our website: <https://www.healthygateways.eu/>

Contact us at: [info@healthygateways.eu](mailto:info@healthygateways.eu)

---

### FOLLOW US ON OUR SOCIAL MEDIA PLATFORMS:



HEALTHY GATEWAYS on **Twitter**

<https://twitter.com/HealthyGateways>



HEALTHY GATEWAYS on **LinkedIn**

<https://www.linkedin.com/in/eu-healthy-gateways-joint-action-583195166/>



HEALTHY GATEWAYS on **ResearchGate**

<https://www.researchgate.net/project/EU-Healthy-Gateways-Joint-Action>



HEALTHY GATEWAYS on **Facebook**

[https://web.facebook.com/EUHealthyGateways/?\\_rdc=1&\\_rdr](https://web.facebook.com/EUHealthyGateways/?_rdc=1&_rdr)



HEALTHY GATEWAYS on **YouTube**

<https://www.youtube.com/channel/UCYHWoK4GKpY4xnmJmkT2duA/featured>

---

---

The content of this report represents the views of the author only and is his/her sole responsibility; it cannot be considered to reflect the views of the European Commission and/or the European Health and Digital Executive Agency (HaDEA) or any other body of the European Union. The European Commission and the Agency do not accept any responsibility for use that may be made of the information it contains.

---

# CONTENTS

<b>1. Foreword and acknowledgements .....</b>	<b>6</b>
<b>2. Cross-border health threats in Europe .....</b>	<b>7</b>
<b>3. Overview of EU HEALTHY GATEWAYS .....</b>	<b>8</b>
<b>4. Joint Action results and outcomes .....</b>	<b>8</b>
4.1 European web-based network for points of entry .....	11
4.2 Training & capacity building .....	14
4.3 Ground crossings transport .....	18
4.4 Air transport sector .....	21
4.5 Maritime transport sector .....	23
4.6 Chemical threats at points of entry .....	27
4.7 Emergency mode operation – response to COVID-19 pandemic .....	28
<b>5. Impact of EU HEALTHY GATEWAYS AND THE WAY FORWARD .....</b>	<b>34</b>
Contributions to European public health preparedness and response .....	34
Sustaining EU HEALTHY GATEWAYS results and activities into the future .....	35
<b>6. EU HEALTHY GATEWAYS consortium .....</b>	<b>37</b>

# 1. FOREWORD AND ACKNOWLEDGMENTS

To support the protection of European Union (EU) citizens from serious cross-border health threats and enhance capacities at European level, the EU's Third Health Programme (2014-2020) in the framework of the 2017 Work Programme co-financed a Joint Action entitled EU HEALTHY GATEWAYS: "Preparedness and action at points of entry (ports, airports, ground crossings)". Within the Health Programme, a Joint Action is a grant co-financed by competent authorities responsible for health of EU Member States (MS) and other countries participating in the Third Health Programme, for these authorities to work together on identified issues with a clear added value for the EU<sup>1</sup>.

The EU HEALTHY GATEWAYS **consortium**<sup>2</sup> unites 38 authorities (including Ministries of Health and Transport, national public health institutes, universities) from 29 countries and the Taiwan Centers for Disease Control (CDC). Initially planned for three years (2018-2021) the EU HEALTHY GATEWAYS Joint Action aimed to support cooperation and coordinated action of Member States to improve their preparedness and response capacities at points of entry (ports, airports, ground crossings), for preventing and combatting cross-border health threats from the transport sector (airplanes, cargo ships, cruise ships, river cruise ships, ferries, trains, buses). The EU HEALTHY GATEWAYS Joint Action received a 12 month extension due to COVID-19.

This Layman Report presents the main objectives, results and deliverables of EU HEALTHY GATEWAYS as well as the Joint Action's value and impact of its results. Targeting the general public, this report is not intended for a scientific audience; all technical deliverables and scientific publications can be found on the EU HEALTHY GATEWAYS website:

<https://www.healthygateways.eu/>

The EU HEALTHY GATEWAYS consortium wishes to thank the European Commission for co-financing the Joint Action and for their continued support of EU HEALTHY GATEWAYS activities, in particular the Joint Action's policy officers from DG SANTE and project officers in HaDEA; international organizations and European agencies participating on the EU HEALTHY GATEWAYS Advisory Board and others for their collaborations with the Joint Action (ECDC, EASA, EMSA, Frontex, ERA, WHO HQ, WHO EURO, ICAO/CAPSCA, US CDC); transport industry representatives and members of each Joint Action working group. Finally, the hard work, efforts and contribution of each EU HEALTHY GATEWAYS partner over the years must be recognized as driving the success and achievements of EU HEALTHY GATEWAYS.



<sup>1</sup> [https://ec.europa.eu/health/system/files/2017-01/wp2017\\_annex\\_en\\_0.pdf](https://ec.europa.eu/health/system/files/2017-01/wp2017_annex_en_0.pdf)

<sup>2</sup> <https://www.healthygateways.eu/About-Us/Consortium>

## 2. CROSS-BORDER HEALTH THREATS IN EUROPE

Air, rail, road, maritime and inland waterways are used for both transport and trade purposes, playing a significant role in the European Union's economy and the lives of its citizens. People and goods travel via aircrafts, trains, road vehicles and ships (cruise, ferry, river cruise, cargo) which enter countries through airports, ground crossings and ports. This continuous and rapid mobility can lead to the spread of infectious diseases from country to country through dispersion of pathogens and vectors, while chemical incidents can also have a significant impact on public health and affect more than one country. These cross-border health threats can affect the health and wellbeing of travelers, transport workers and even local communities.



Instances of travel leading to disease spread across borders has been seen both during the current COVID-19 pandemic and past public health events. When the influenza A(H1N1) pandemic began in 2009, air travel introduced influenza A(H1N1) to countries that were not previously affected by it (ECDC, 2017)<sup>3</sup>. Other previous public health emergencies of international concern such as 2014 Ebola Virus Disease and 2016 Zika Virus Disease also impacted all modes of transport and presented challenges to the authorities dealing with events.

European studies have identified weaknesses in countries' capacities to respond to public health threats at points of entry, revealing lack of competencies in public health risk assessment, preparedness plans



and risk communication (SHIPSAN Joint Action, 2014)<sup>4</sup>. These challenges were highlighted with the emergence of the COVID-19 pandemic which brought an unprecedented impact to the European and global transport sector, a sector offering people the ability to travel for business or leisure while serving essential trade activities. In response to the COVID-19 pandemic and to prevent the spread of disease, many EU MS and countries globally implemented border closures and additional public health measures leading to movement restrictions on citizens.

As recognized by EU Decision 1082/2013/EU for serious cross-border threats to health<sup>5</sup>, there is a need to strengthen and improve responses to health threats that can impact one or more Member States. Since cross-border health threats at points of entry cannot be effectively addressed by Member States individually, cooperation is required between countries at a European level.



<sup>3</sup> <https://www.ecdc.europa.eu/en/all-topics-z/travellers-health/infectious-diseases-aircraft>

<sup>4</sup> [https://www.shipsan.eu/Portals/0/docs/State\\_of\\_the\\_Art\\_Report\\_27062016\\_.pdf](https://www.shipsan.eu/Portals/0/docs/State_of_the_Art_Report_27062016_.pdf)

<sup>5</sup> <https://eur-lex.europa.eu/legal-content/EN/TXT/?uri=celex%3A32013D1082>

### 3. OVERVIEW OF EU HEALTHY GATEWAYS

EU HEALTHY GATEWAYS built in two projects established under previously funded EU Health Programme projects SHIPSAN<sup>6</sup> (2 projects and a Joint Action from 2006-2016) and AIRSAN<sup>7</sup> (2013-2015). With a history dating back to 2006, many consortium members have been successfully collaborating at a European level in research, education and policy activities. Building on a foundation focused on public health threats in maritime and air transport, EU HEALTHY GATEWAYS expanded the scope of its activities to include ground crossings transport, thus creating a Joint Action addressing all types of health threats (biological, vectors, chemical), points of entry and means of transport.



The EU HEALTHY GATEWAYS Joint Action through its activities aims to prepare both Member State authorities and the transport sector for **immediate** and **adequate** response to serious cross-border threats to health.

<sup>6</sup> <http://www.shipsan.eu>

<sup>7</sup> <https://www.airsan.eu/AboutTheProject.aspx>

## GENERAL OBJECTIVES

How the Joint Action fulfills a need

**EU HEALTHY GATEWAYS involves nearly all European countries and conducts activities at a European level. This supports cooperation and coordination among EU MS to improve preparedness and response capacities to public health events at points of entry.**

**EU HEALTHY GATEWAYS is multi-sectorial in its activities bringing together the health and transport sectors, engaging all levels of government from national ministries to local level authorities at points of entry, while also involving transport industry authorities.**

With means of transport moving rapidly from country to country, preparedness planning and public health response measures must be addressed at a European level, and measures must be compatible among countries.

To address public health threats at points of entry, involvement is required from multiple sectors at different levels.

## JOINT ACTION TARGET GROUPS

- **Personnel working at Member State national or local authorities:** public health authorities responsible for preparedness and response at ports, airports, ground crossings and non-public health authorities such as customs control officers, border control officers, security officers
- **Transport workers in air, maritime, rail, and road sector:** civil aviation personnel and seafarers travelling on ships sailing under the flag of an EU country
- **Travelling public:** people travelling by air, land, sea and inland waterways

## EU HEALTHY GATEWAYS WORK PACKAGES

The EU HEALTHY GATEWAYS Joint Action is structured around 9 Work Packages (WP), interconnected in their activities to ensure deliverables produced are interoperable, with core Work Packages feeding into activities of subject-matter Work Packages.

Overall **coordination** and scientific leadership of the consortium to ensure activities are coordinated among the multiple Work Packages and participating countries

WP1

Implement **dissemination** strategies to ensure results are communicated to target groups and the wider public

WP2

Oversee **evaluation** of activities to ensure the Joint Action reaches its objectives

WP3

Integration in national policies and **sustainability**, to ensure the continuation of activities and uptake of results

WP4

Strengthening core capacities at **ground crossings** via State of Art report, best practices identification, advice documents, capacity building resources for public health event preparedness and management

WP5

Strengthening core capacities at **airports** via best practices identification, advice documents, capacity building resources for public health event preparedness and management

WP6

Strengthening core capacities at **ports** via best practices identification, advice documents, capacity building resources for public health event preparedness and management

WP7

**Chemical threats** at all point of entry types: guidance documents, training resources and preparedness tools

WP8

**Training** on best practices, guidelines and action plans at European, national and local level for all point of entry types

WP9

## 4. JOINT ACTION RESULTS AND OUTCOMES



**4.1**

**EU POENET**

**4.3**

**GROUND CROSSINGS  
TRANSPORT**



**4.2**

**TRAINING & CAPACITY  
BUILDING**

**4.4**

**AIR TRANSPORT**

**4.6**

**CHEMICAL THREATS**



**4.5**

**MARITIME TRANSPORT**

**4.7**

**COVID-19**

## 4.1 EUROPEAN WEB-BASED NETWORK FOR POINTS OF ENTRY (EU POENET)

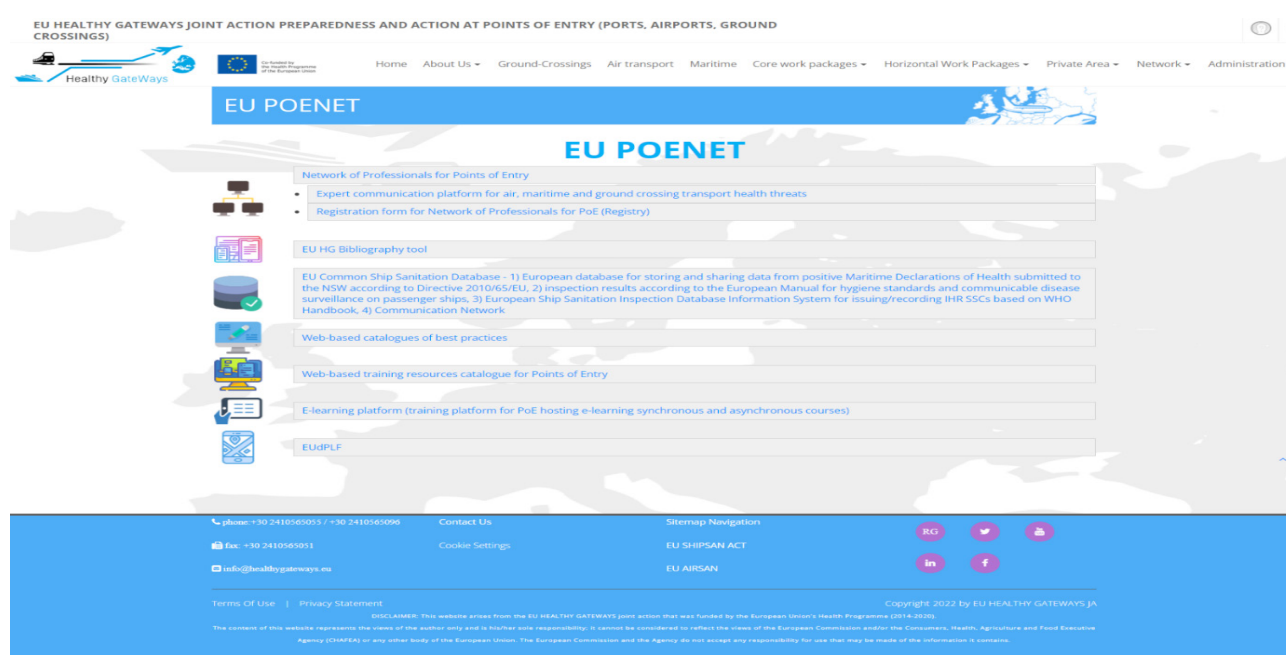
Supports communication and rapid notification in the event of cross-border risks to health at points of entry.

The **European web-based network<sup>8</sup> for points of entry** (<https://www.healthygateways.eu/POENET>) was developed to facilitate rapid communication and notification for cross-border health threats at ports, airports and ground crossings. The network also facilitates exchange of knowledge, information and good practices among experts in public health, competent authorities and other stakeholders.

Experts in public health and points of entry can be drawn from the network to provide training at European, national, local level and provide ad-hoc advice. The network is available for use now and in the post-COVID-19 era for routine operations and during future public health emergencies.

Structured into different public and privately available components, **EU POENET includes:**

1. Network of Professionals for Points of Entry Registry
2. Expert communication platform for air, maritime and ground crossing health threats
3. Catalogues of best practices for points of entry
4. Bibliography tool for points of entry
5. Web-based training resources catalogue
6. E-learning platform (training platform for points of entry hosting e-learning synchronous and asynchronous courses)
7. EU digital Passenger Locator Form (EUdPLF)
8. EU Common Ship Sanitation Database



<sup>8</sup> <https://www.healthygateways.eu/User-Login?returnurl=%2fPOENET>

1. [Network of Professionals for Points of Entry Registry](#) (private for registered users: <https://www.healthygateways.eu/User-Login?returnurl=%2fNetwork%2fCommunication-Network-Registry>)

A **searchable database** of European and international professionals with specialized expertise in public health issues related to the transport sector. Experts are drawn from:

- Members of the EU HEALTHY GATEWAYS consortium, technical working groups and advisory board
- Inspectors registered in the EU SHIPSAN Information System (EU SIS)
- List of European points of entry including contact details
- List of International Health Regulation (IHR) authorized ports (with contact details)

2. [Expert communication platform for air, maritime and ground crossing health threats](#) (private for registered USERS: <https://www.healthygateways.eu/User-Login?returnurl=%2fNetwork%2fCommunication-Platform%2fCommunication-Network-Search>)

Used for **knowledge exchange** and facilitating competent authorities with information sharing for risk assessment of public health events.

3. [Catalogues of best practices for points of entry](#) (privately available upon request: [info@healthygateways.eu](mailto:info@healthygateways.eu))

**Searchable catalogue of “best practices”** identified for airports, ground crossings and ports, covering all types of threats, public health emergency contingency planning, risk communication and advice for public health event management. For use by Member State health authorities to be implemented at operational level.

4. [Bibliography tool for points of entry](#) (publicly available: <https://www.healthygateways.eu/Bibliography-Tool>)

**Compiles existing European and international guidance documents** in the air and maritime sector addressing all types of public health threats (biological, chemical, environmental, radiological, nuclear). **Searchable tool** allowing users to identify key resource documents by transport sector type, public health threat, disease type or specific keyword.

5. [Web-based training resources catalogue](#) (public)

EU HEALTHY GATEWAYS JOINT ACTION PREPAREDNESS AND ACTION AT POINTS OF ENTRY (PORTS, AIRPORTS, GROUND CROSSINGS)

Healthy GateWays

Home About Us Ground-Crossings Air transport Maritime Core work packages Horizontal Work Packages Private Area Network Administration

## Communication Network (Registry)

Under the framework of EU HEALTHY GATEWAYS Joint Action (GRANT AGREEMENT NUMBER: 801493), a **Network of Professionals for Points of Entry** has been developed including an **expert communication platform** for air, maritime and ground crossing transport health threats.

This web based network (EU POENET) includes **specific discussion forums** and could be used by **professionals for knowledge exchange and for facilitating competent authorities with information sharing that can be used to the risk assessment of public health events. Contact details will only be used as recipients of communications, updates and additional questions on this processing operation.**

Type of Organisation / Authority:

Country:

Authorised:

Name of Organisation:

Last Name:

Deleted:

phone: +30 2410565055 / +30 2410565096 Contact Us

fax: +30 2410565091 Cookie Settings

info@healthygateways.eu

Sitemap Navigation

EU SHIPSAN ACT

EU AIRSAN

Terms of Use Privacy Statement

Copyright 2022 by EU HEALTHY GATEWAYS JA

DISCLAIMER: This website arises from the EU HEALTHY GATEWAYS joint action that was funded by the European Union's Health Programme (2014-2020). The content of this website represents the views of the author only and is his/her sole responsibility; it cannot be considered to reflect the views of the European Commission and/or the Consumers, Health, Agriculture and Food Executive Agency (CHAFEA) or any other body of the European Union. The European Commission and the Agency do not accept any responsibility for use that may be made of the information it contains.

and private components: <https://www.healthygateways.eu/User-Login?returnurl=%2fWeb-based-training-resources-catalogue>)

**Searchable catalogue compiling training resources from international, European and national courses** that are specific to points of entry and address public health threats in the maritime, air and ground-crossings sector (including chemical threats.) Resource for experts and professionals (e.g. conveyance inspectors, epidemiologists, personnel working at countries' authorities responsible for preparedness and response at points of entry, public health authorities, national authorities).

**6. E-learning platform (training platform for points of entry hosting e-learning synchronous and asynchronous courses)** (<https://elearning.shipsan.eu/>)

**Hosts training resources for:**

- Public health event management at points of entry
- Health and hygiene on ships
- European Union digital Passenger Locator Form

**7. EU digital Passenger Locator Form (EUdPLF)** (<https://app.euplf.eu/#/>)

Provides the web-based application for the European Digital Passenger Locator Form (dPLF).

**8. EU Common Ship Sanitation Database**

Incorporates the EU SHIPSAN Information System (SIS), comprised of:

- European database for storing and sharing data from positive Maritime Declarations of Health submitted to the NSW according to Directive 2010/65/EU
- Inspection results according to the European Manual for Hygiene Standards and Communicable Disease Surveillance on Passenger Ships
- European Ship Sanitation Inspection Database Information System for issuing/recording IHR Ship Sanitation Certificates based on the WHO Handbook
- Communication Network platform, allowing ship-to-port/port to National/port-to-port information sharing on response to public health events (private)

**Course Categories:**

- EU HEALTHY GATEWAYS**
- Health and Hygiene on ships**
- EUdPLF**

**INFO**  
EU HEALTHY GATEWAYS  
EU SHIPSAN ACT

**CONTACT US**  
IT support: [it@healthygateways.eu](mailto:it@healthygateways.eu) / [it@shipsan.eu](mailto:it@shipsan.eu)  
Phone: +30 2410565055 / +30 2410565096 fax: +30 2410565051  
E-mail: [info@healthygateways.eu](mailto:info@healthygateways.eu)

**GET SOCIAL**  
[f](#) [p](#) [t](#) [g+](#)

Copyright © elearning.shipsan.eu 2021. All rights reserved

Get the mobile app

## 4.2 TRAINING AND CAPACITY BUILDING AT POINTS OF ENTRY

Supports capacity-building including training at European, national and local level considering the local context and ensuring replicability, transferability and sustainability.

### To design and develop relevant training materials, EU HEALTHY GATEWAYS:

- Conducted an assessment of training needs<sup>9</sup> for infectious disease management at major European ports, airports, and ground crossings
- Reviewed highly effective education and training interventions<sup>10</sup> for infectious disease control, with emphasis on cross-border settings

### EU HEALTHY GATEWAYS Training Courses

Three European level training of the trainers' courses for preparedness and response to public health events were conducted for:

1. Ports
2. Airports
3. Ground crossings

#### European level training

- 130+ European trainees
- 20+ non-European trainees

The training of the trainers' courses contributed to the **transfer of knowledge** and ensured **replicability** of Joint Action activities at a national and local level.

National competent authorities and local point of entry health authorities received training to:

- Increase competence and capacity to manage public health events at points of entry and on conveyances, training on risk assessment, decision-making for evidence-based health measures and crisis communication
- Develop and organize national/local training courses in their own countries – with support from Standard Operating Procedures to design and develop training courses

#### National and local level training

- 300+ trainees

Over 10 national/local level training courses were conducted in Member States under the EU HEALTHY GATEWAYS framework

- Training course topics modified based on national/local context and priorities

Training materials available to EU MS  
(contact: [info@healthygateways.eu](mailto:info@healthygateways.eu))

<sup>9</sup> <https://bmcpublichealth.biomedcentral.com/articles/10.1186/s12889-021-11008-z>

<sup>10</sup> [https://www.biomedcentral.com/epdf/10.1186/s12992-020-00604-0?sharing\\_token=uBGikFBzQMsokNMOPme-1m\\_BpE1tBhCbNbW3Buzl2RO\\_TqtG9TnKBBqXceOScKd2kM94dfAQcCVx1JHYJkhN\\_fZe5W4mkypzLHEOnPuKIZ3nUJH-y4ow6ccL2VkclohpFK8l4qQR408XFrdShwSCg-l8F85pFnTWf5FIX-gZZ0%3D](https://www.biomedcentral.com/epdf/10.1186/s12992-020-00604-0?sharing_token=uBGikFBzQMsokNMOPme-1m_BpE1tBhCbNbW3Buzl2RO_TqtG9TnKBBqXceOScKd2kM94dfAQcCVx1JHYJkhN_fZe5W4mkypzLHEOnPuKIZ3nUJH-y4ow6ccL2VkclohpFK8l4qQR408XFrdShwSCg-l8F85pFnTWf5FIX-gZZ0%3D)



### EU HEALTHY GATEWAYS Webinar Series

Since 2018, **14 webinars** were conducted on topics related to public health event management at points of entry.

EU HEALTHY GATEWAYS webinars addressed:

- Border health measures
- Passenger ship inspections
- Aircraft disinfection & disinsection
- Chemical preparedness at points of entry
- Public health emergency contingency planning at ports
- COVID-19 preparedness, response, risk communication

**2000+** registrants

**1800+** total views  
(live & recorded)

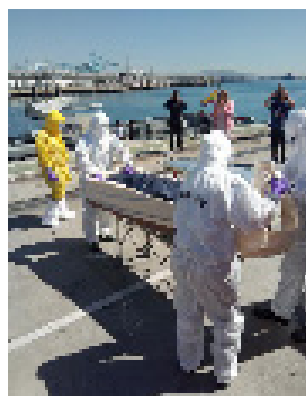
Past webinars available for play-back viewing.

More information here:

<https://www.healthygateways.eu/Core-work-packages/Training>

### Exchange visits

EU HEALTHY GATEWAYS facilitated exchange visits between Joint Action consortium members, where one country was able to attend as an observer the tabletop or simulation exercise of another country, to share best practices, knowledge, experiences and skills.



#### EU HEALTHY GATEWAYS site visits:

- **MARSEC 2019 simulation exercise in Spain**

Representatives from Italy and Finland attended Spanish national simulation exercise for hemorrhagic fever on a cargo ship

- **Ljubljana Airport “Jože Pučnik” in Slovenia**

Representatives from the Republic of Serbia observed air transport operations at the Ljubljana Airport

## Tabletop & simulation exercises

### European level

EU HEALTHY GATEWAYS Joint Action designed and conducted a **European level multi-sectorial** tabletop exercise<sup>11</sup> to test guidelines for inter-country communication and information flow in public health outbreak investigations on ships. The exercise provided participants an opportunity to interact with and understand the structures, procedures, roles and responsibilities when responding to a public health event.

### National level and local (point of entry) level

Guidance and scenario packages have been developed for Member States to conduct tabletop or simulation exercises for points of entry in their countries.

- General guidance for organization of tabletop & simulation exercises at points of entry
- Multi-sectorial national tabletop exercise package for all points of entry (with a focus on contact tracing)
- Guidance and scenario package for designing discussion-based exercises at airports & ports

#### Exercise in brief:

- 2 scenarios: COVID-19 & GI
- 30 players from 5 EU MS
- 2 shipping companies
  - 63 observers

#### Exercises conducted in Member States:

- **Lithuania** – Preparedness and management of suspected Ebola case in aircraft coming to Vilnius airport from Ukraine (December 2019)
- **Italy** – Tabletop exercise for ports and the maritime sector (October 2021)



<sup>11</sup> [https://www.healthygateways.eu/Portals/0/plcdocs/D9\\_3\\_\\_M4\\_5\\_Multisectorial\\_TTE\\_EU\\_level\\_Report\\_V1\\_5\\_FINAL\\_20210714\\_PUBLIC\\_VERSION.pdf?ver=2021-07-28-175042-993](https://www.healthygateways.eu/Portals/0/plcdocs/D9_3__M4_5_Multisectorial_TTE_EU_level_Report_V1_5_FINAL_20210714_PUBLIC_VERSION.pdf?ver=2021-07-28-175042-993)

## Risk profile tool for ports

A tool serving group-based discussions about what defines risk at the specific point of entry (port) level. The tool targets professionals involved in preparedness and response to infectious diseases at ports (public health professionals, port administration authorities, port health authorities).

### Aim:

- Gain insight into external factors influencing risk for infectious disease introduction via the port and implications for the local port
- Use insight from risks to prioritize preparedness efforts at the local port

## Standard Operating Procedures (SOPs) for mosquito surveillance and control

The SOPs provide information for competent authorities at **ports and airports** to consider when preparing their own procedures for **mosquito** surveillance and control.

Elements considered in the SOPs include:

- Legal framework
- Communication
- Decision-making process
- Rapid risk assessment
- Routine and emergency measures
- Case studies

## Risk factor 1 - Type of conveyances at port

### Definition

*Types of conveyances at the port.*

### Guiding questions

#### Guiding questions

1. What are different types of conveyances (e.g. recreational ships, cargo ships, ferries, cruise ships) arriving at the port? Identify per conveyance type how it contributes to risk for introduction of infectious diseases at the port.

2. Would additional distinctions or considerations in type of conveyance be appropriate? For example, how does maintenance of a conveyance or measures taken on board of the conveyance contribute to the risk for the port?

#### Space to summarize your answers

Type your answer here

### Scoring

#### Type of conveyances at port

Select the most fitting answers by typing '1' into the orange cell next to the answer. By doing so, the tool will automatically calculate your score for this risk factor based on the weight of each level of exposure and transport your score to the summary sheet. To deselect an answer use 'delete'

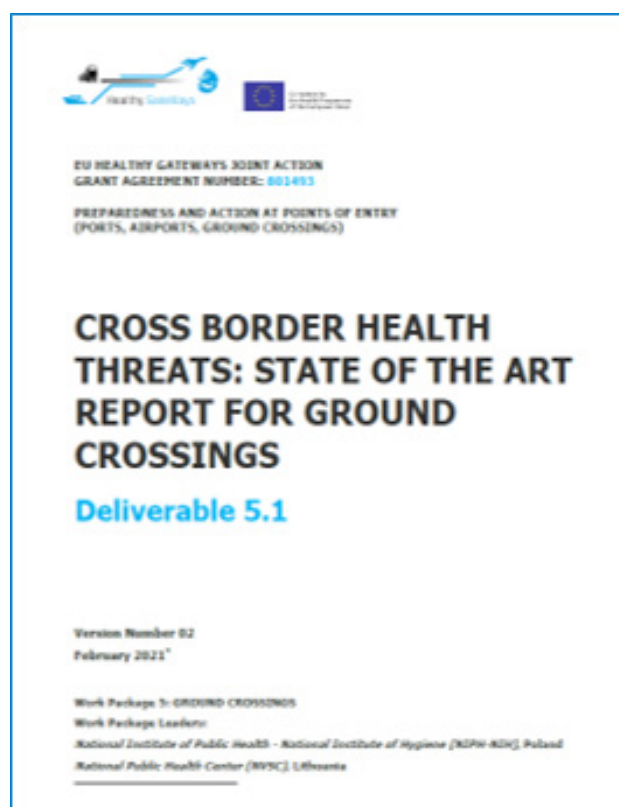
Majority recreational ships	
Majority cargo ships	
Majority ferries	
Majority cruise ships	

## 4.3 GROUND CROSSINGS TRANSPORT

Focused on strengthening core public health capacities at ground crossings

Public health threats related to ground crossings is a less developed area compared to other point of entry types, with fewer studies and guidelines available. Ground crossings are highly variable in terms of size, type of traveler and cargo flows, and there are special elements unique only to the context of ground crossings that required in-depth exploration and characterization.

To fulfill this gap and identify needs, priorities and existing materials on this topic a **State of the Art**<sup>12</sup> report was produced, and through EU HEALTHY GATEWAYS activities increased attention has been focused on public health threats at ground crossings and land transport means.



<sup>12</sup> [https://www.healthygateways.eu/Portals/0/plcdocs/EUHG\\_D5.1\\_State\\_of\\_the\\_Art\\_Report.pdf?ver=2021-03-19-122838-007](https://www.healthygateways.eu/Portals/0/plcdocs/EUHG_D5.1_State_of_the_Art_Report.pdf?ver=2021-03-19-122838-007)

## Cross-border health threats: State of the Art report for ground crossings

Comprised of several components, each addresses a unique area related to public health issues in ground crossings settings:

<b>List of 350+ external eastern European Union ground crossings</b>	Characterize each ground crossing by country, mode of transport (road, rail, mixed) and opening hours
<b>Identification of “best practices” implemented at European ground crossings</b>	Use of a survey (conducted prior to COVID-19) on preparedness and response to biological/chemical threats at ground crossings with eastern external EU border -> only 4% of respondents declared they had practice/experience related to management of public health threats at ground crossings
<b>Scoping literature review on public health events related to ground crossings</b>	With 7000+ articles screened, indicate that to achieve cross-border surveillance/prevention/control of disease (e.g. related to malaria, Ebola) coordinated actions must be taken on both sides of a border
<b>Vectors/vector borne disease threats at east and south-east EU borders</b>	Exploring transport corridors and possible actions to stop invasion of vectors into new territories
<b>Legal framework</b>	Exploring legal grounds for responding to serious public health threats of cross-border significance in the aspect of land border crossings in EU countries (determined by international law, WHO and EU)

## Model Memorandums of Understanding

**Two model Memorandums of Understanding (MoUs)** were developed to foster collaboration between countries and at a local level, for public health preparedness and response. The MoUs can be modified based on the local context and used by Joint Action countries:

### Model MoU on personal data exchange for public health contact tracing

- Short term solution addressing delays in timely exchange of data between conveyance operators and public health authorities for contact tracing

### Model MoU on coordination of response to public health events of mutual interest, for use at ground crossings between 2 countries

- To be adopted by EU and non-EU MS that share land borders, for bilateral cooperation in preparedness & response to cross-border health threats

### Training of the trainers' course (ground crossings)

European level training course conducted in a web-based format (2021) for public health event management at ground crossings.

Training addressed:

- Preparedness planning and communication
- Event detection, verification, risk assessment, decision making
- Chemical event management
- Country experiences with COVID-19 management

#### Overview of trainees:

- **60** participants from **14** EU countries & **5** non-EU countries
- **14** presenters/ facilitators and **6** observers from DG SANTE, ECDC and WHO EURO

### Regional workshop on challenges and best practices

In 2021 a workshop was conducted bringing together nearly 20 experts from different sectors (public health, border control) and different levels (local, national, regional) from Lithuania, Poland, WHO and ECDC to:

1. Enable exchange of experiences and discuss challenges in the field of public health, in particular issues related to COVID-19 in the context of ground crossings
2. Discuss challenges related to implementation of health protection measures at ground crossings

#### Lessons learned:

- Improved understanding of procedures and responding to public health events (exposure to infectious travellers on international journey)
- Need for harmonized digital tool for contact tracing



## 4.4 AIR TRANSPORT SECTOR

Focused on strengthening core public health capacities at airports

### “Best practices” implemented at airports

A survey was conducted in 2018 among countries participating in EU HEALTHY GATEWAYS to identify best practices implemented at their designated airports.

Best practices were collected for:

- Core capacities implementation
- Public health event detection, surveillance and management
- Vector surveillance and control at airports
- Public health emergency contingency planning
- Risk communication
- Inspection of aircrafts

Practices are compiled into a **web-based, searchable** catalogue of best practices for points of entry.

For further information about accessing the catalogues: [info@healthygateways.eu](mailto:info@healthygateways.eu)

**Prior to COVID-19, to identify best practices for public health contact tracing, a report was produced on Legal grounds for contact tracing, responding to serious public health threats of cross-border significance in the aspect of air border crossings in EU countries (determined by international law, WHO and EU).**

### Training of the trainers’ course (air transport)

A European level 3-day face-to-face training course on public health preparedness and response at airports was conducted (Belgrade, 2019).

A **competency profile** was developed for professionals involved in infectious disease control at airports.

Training focused on:

- Legal framework of preparedness and response planning for public health events at airports and on aircrafts
- Conducting risk assessment and managing public health events at airports and on aircrafts
- Decision-making on public health measures that are evidence-based and proportionate

#### Overview of trainees:

- **37** participants from **20** EU countries
- **6** participants from **4** non-EU countries
- **23** presenters, facilitators, observers (WHO EURO, ECDC)



## Model Memorandum of Understanding

A model MoU was developed to outline the rules of cooperation among different competent authorities at airports (local level) that must be involved in response to a public health event.

The MoU can be modified by countries to their national/local context to facilitate collaboration among different sectors.

EU HEALTHY GATEWAYS JOINT ACTION  
GRANT AGREEMENT NUMBER: 801493

PREPAREDNESS AND ACTION AT POINTS OF ENTRY  
(PORTS, AIRPORTS, GROUND CROSSINGS)

## MODEL FOR A MEMORANDUM OF UNDERSTANDING

FOR AIRPORT LOCAL COMPETENT AUTHORITIES AGREEMENT  
OF COOPERATION FOR RESPONDING TO PUBLIC HEALTH  
EVENTS

### MODEL MoU

#### Suggested title of the MoU

Memorandum of Understanding on the function of the competent authorities responsible for responding to public health events at airport, between

The public health authority at the airport represented in this act by \_\_\_\_\_,  
\_\_\_\_\_, represented in this act by \_\_\_\_\_,  
\_\_\_\_\_, represented in this act by \_\_\_\_\_,  
\_\_\_\_\_, represented in this act by \_\_\_\_\_,  
and \_\_\_\_\_, represented in this act by \_\_\_\_\_,  
hereinafter referred to as "the Authorities":

Taking into consideration:

- Decision No 1082/2013/EU of the European Parliament and of the Council of 22 October 2013 on serious cross-border threats to health and repealing Decision No 2119/98/EC;
- International Health Regulations 2005;
- The WHO Tool for Joint External Evaluation;
- The WHO Guide for public health emergency contingency planning at designated points of entry;
- The WHO Assessment tool for core capacity requirements at designated airports, ports and ground crossings;
- The extensive EU legislation to streamline and strengthen European Union capacities and structures to better protect European citizens from a wide range of serious cross-border health threats and other relevant international instruments concerning the effective response to serious cross-border health threats
- ..... **\*(Each airport to complete based on the relevant legal context)**

Have reached the following understanding:

.....

## Tabletop/simulation exercises at airports

To promote coordinated cross-sectorial actions and interoperability of preparedness and response plans, **instructions for developing tabletop/simulation exercises were developed.**

The instruction package supports countries to test their local public health emergency contingency plans for airports in the context of COVID-19:

Scenarios	Event
0	Preliminary assessment
1	Passenger with COVID-19 in an airplane
2	Passenger with COVID-19 in airport - transit area
3	New SARS-CoV-2 variant of concern

## Air transport component (Point of Entry Bibliography tool)

The tool currently contains 200+ existing international and European guidance documents related to public health threats and the air sector (including COVID-19 guidance). Entries are searchable by:

- Keyword
- Public health function
- Type of health threat
- Specific disease
- Language of publication
- Publisher

## 4.5 MARITIME TRANSPORT SECTOR

Focused on strengthening core public health capacities at ports

### European inspection programme for ships

EU HEALTHY GATEWAYS implements a programme<sup>13</sup> for passenger ship inspections and audits in European countries in accordance with standards in the European Manual for Hygiene Standards and Communicable Disease Surveillance on Passenger Ships<sup>14</sup>.

#### Aim of inspection activities:

- Common EU level **inspection schedule** for passenger ships based on target factor (priority to ferries and inland navigation vessels, considering historical inspection results) composed annually by all participating authorities in EU ports
- Facilitate EU MS to implement best practice for coordinating and executing hygiene inspections on conveyances, in order to prevent cross-border disease spread and improve compliance with European legislation standards

#### Scheduling of inspections with the use of target factor:

An **inspection grading system** methodology was developed, pilot-tested (2018) and applied as of 2019, for inspections on passenger ships conducted according to the European Manual.

#### Grading system:

- Grade A: 57 inspections
- Grades B, C or D: 16 inspections



2019

**86**

**Inspections**

71 cruise

5 ferries

10 river ships

2020

**10**

**Inspections**

at one port

2021

**1**

**Inspection**

Participating:  
**31 countries**  
**12 ports**

Further information on the inspection grading system:

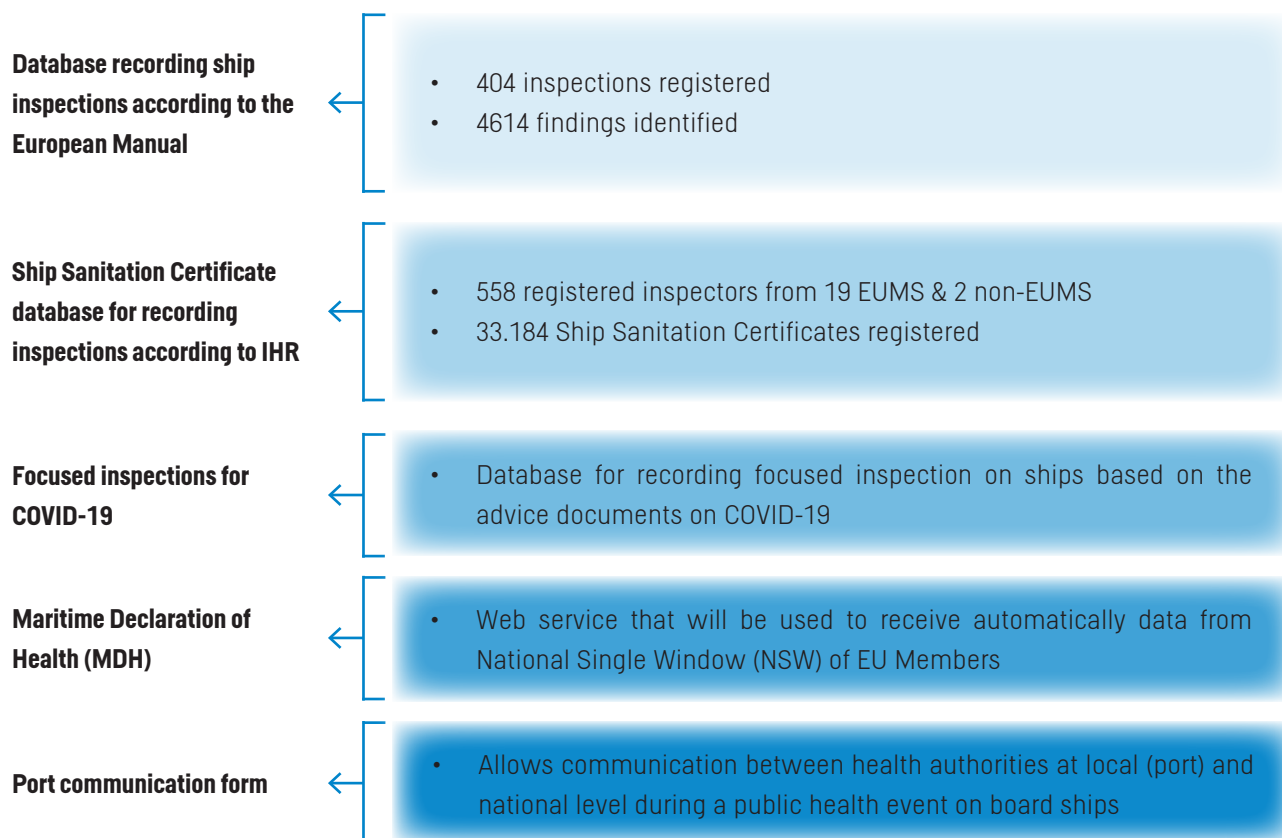
<https://www.healthygateways.eu/Inspection-Grading-System>

<sup>13</sup> <https://www.healthygateways.eu/European-Inspection-Program-for-ships>

<sup>14</sup> <https://www.shipsan.eu/Home/EuropeanManual.aspx>

## EU Common Ship Sanitation Database

EU HEALTHY GATEWAYS operates the **EU Common Ship Sanitation Database** (previously EU SHIPSAN ACT Information System<sup>15</sup>) comprised of the following components:



## Training of the trainers' course (maritime transport)

- European level 3-day face-to-face training course on public health preparedness and response at ports and on ships
- Training resources used in **8+ national level** courses

## Model Memorandum of Understanding

- Describes cooperation among competent authorities at ports (local level) that must be involved in response to public health events – to be applied by countries in their national / local context to foster collaboration between different authorities

### Overview of trainees:

- **35** participants from **19** European countries
- **9** participants from **9** non-European countries
  - **15** presenters, facilitators, observers

<sup>15</sup> <https://sis.shipsan.eu>

## Best practices implemented at ports

- Identified and compiled best practices implemented at their designated ports into the web-based, searchable catalogue of best practices for points of entry

For further information about accessing the catalogues:  
[info@healthygateways.eu](mailto:info@healthygateways.eu)

## Tool for development/assessment of contingency plans (ports)

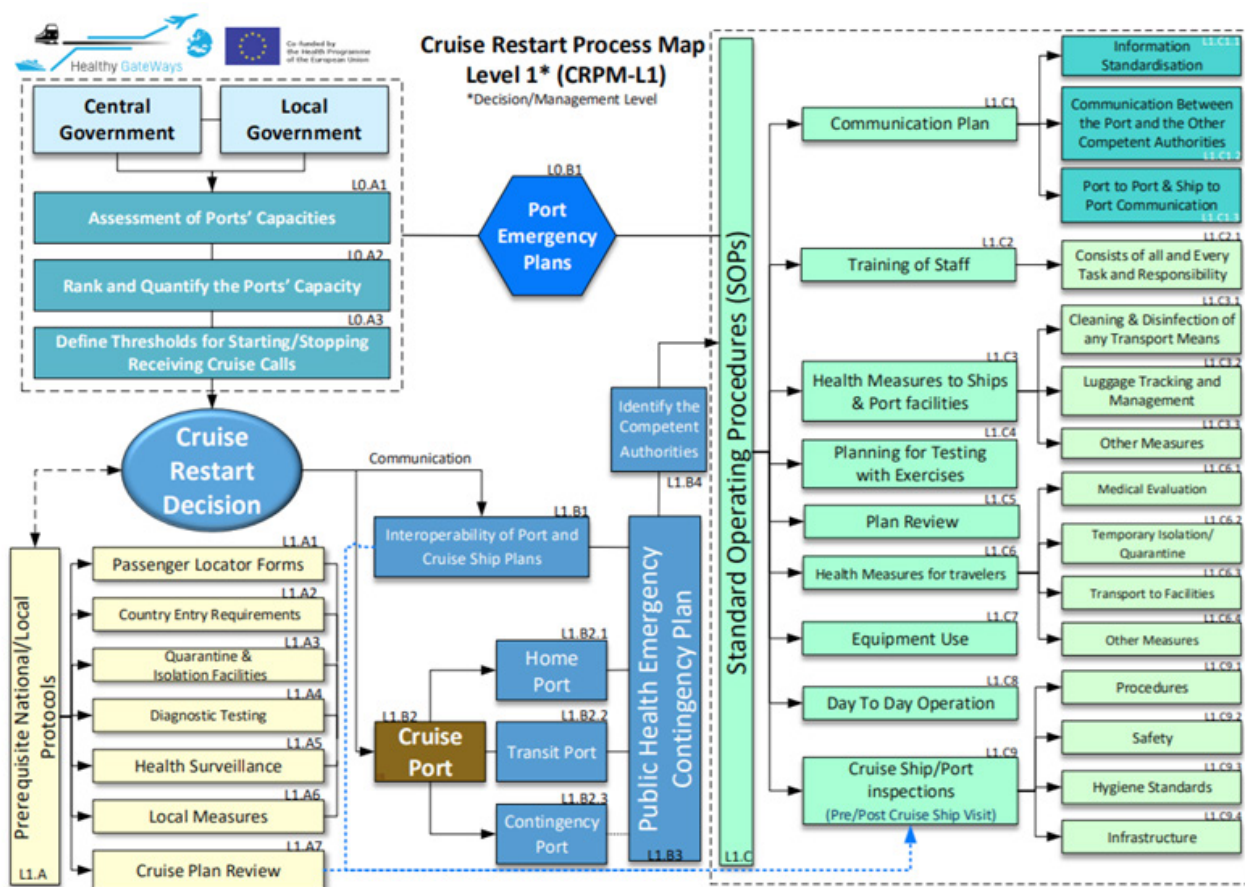
A tool produced to:

- Suggest concrete steps to develop or assess current port public health emergency contingency plans
- Assist local port and national stakeholders where

International Health Regulations (2005) or Decision No 1082/2013/EU on serious cross-border health threats is implemented

**Technical tool<sup>16</sup>** consists of:

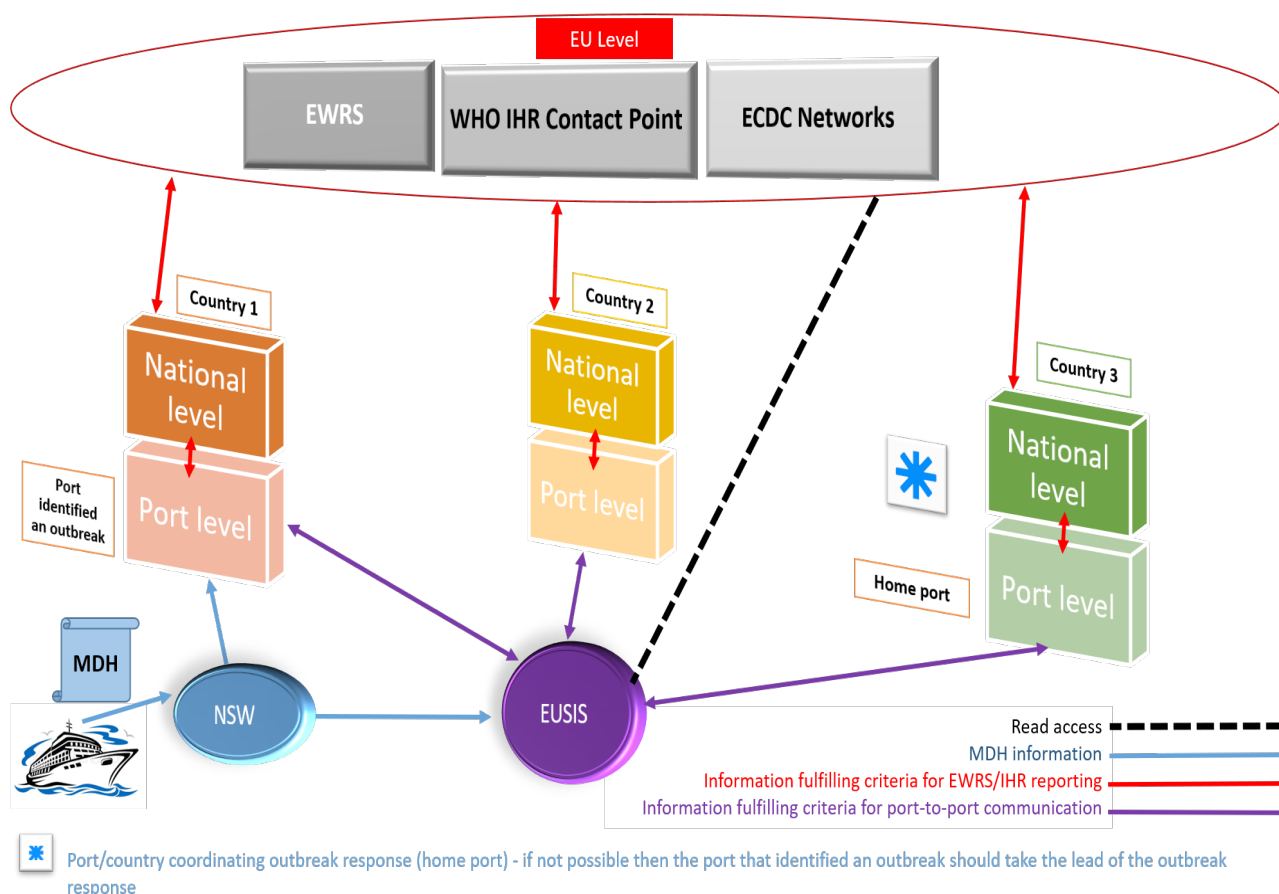
- Template of Generic public health emergency contingency plan for designated ports
- Cruise Restart Process Map (CRPM) – outlines path, process and procedures to be followed by port / local authorities for cruise ships to be able to safely visit the port
- Explanatory notes on Cruise Restart Process Map
- Template of Adapted COVID-19 specific public health port emergency contingency plan



<sup>16</sup> <https://www.healthygateways.eu/Tool-for-contingency-plan-development-and-assessment-for-ports>

## Guidelines for intercountry communication and information flow in outbreak investigations on ships and public health event management

- Guidelines<sup>17</sup> outline stakeholder roles and responsibilities involved in outbreak investigation on board ships
- Suggests information flow, standardised information sharing and coordination of response
- Describes existing platforms for information sharing
- Tested via EU level multi-sectorial tabletop exercise<sup>18</sup> at ports



<sup>17</sup> [https://www.healthygateways.eu/Portals/0/plcdocs/D9\\_4\\_EUHG\\_Inter-country\\_communication\\_15\\_07\\_2021\\_PUBLIC\\_VERSION\\_2.pdf](https://www.healthygateways.eu/Portals/0/plcdocs/D9_4_EUHG_Inter-country_communication_15_07_2021_PUBLIC_VERSION_2.pdf)

<sup>18</sup> [https://www.healthygateways.eu/Portals/0/plcdocs/D9\\_3\\_M4\\_5\\_Multisectorial\\_TTE\\_EU\\_level\\_Report\\_V1\\_5\\_FINAL\\_20210714\\_PUBLIC\\_VERSION.pdf?ver=2021-07-28-175042-993](https://www.healthygateways.eu/Portals/0/plcdocs/D9_3_M4_5_Multisectorial_TTE_EU_level_Report_V1_5_FINAL_20210714_PUBLIC_VERSION.pdf?ver=2021-07-28-175042-993)

## 4.6 CHEMICAL THREATS AT POINTS OF ENTRY

Focused on addressing chemical threats at all point of entry types

### Training resources

- **Two workshops on chemical preparedness** conducted for chemical preparedness at points of entry and dealing with chemical incidents
- Produced **compendium of good practices and gaps for chemicals at points of entry** – practices agreed on by personnel of competent authorities (country level or local level) dealing with chemical incidents at points of entry

#### Workshop 1:

- Identified gaps, opportunities and improved understanding of existing arrangements at points of entry in countries
- **43** trainees from **20** EU and **4** non-EU countries

#### Workshop 2:

- Addressed chemical safety regarding chemical containers at ports and ground crossings, including transport of chemicals
- **35** trainees from **12** EU countries

### Guidance for dealing with chemicals and chemical incidents at points of entry

The guidance complements existing arrangements in Member States and assists in preparedness and response to chemical incidents at ports, airports and ground crossings. As a reference document, it is aimed at public health professionals, health workers at points of entry and other relevant agencies who may be notified if a public health incident involving chemicals occurs.

Guidance document addresses:

- International requirements and public health framework
- Chemical incidents at points of entry
- Transport of chemicals at points of entry
- Public health risk assessment
- Planning and preparedness at points of entry for chemicals
- Surveillance and detection
- Public health response



### Chemical preparedness assessment tool

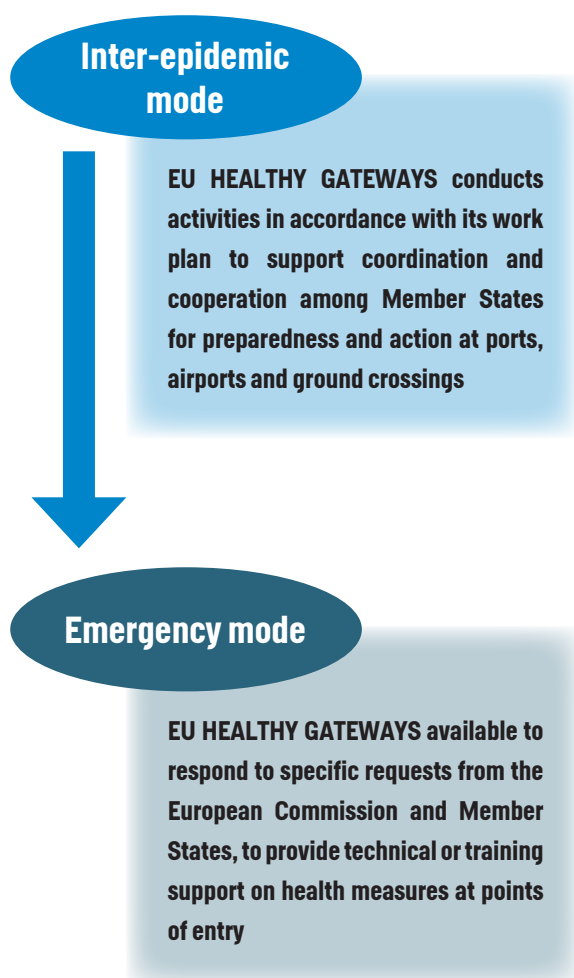
The tool provides a framework for consistent planning of hazard-specific competencies and can be used for auditing, training and exercising purposes at the point of entry and intended for use by public health planners, safety managers and officials working at the point of entry/state jurisdictional level.

- Collates information on the hazards that exist at a point of entry, allowing the point of entry to consider how to reduce or manage the risks of an incident causing an on and off-site impact

## 4.7 EMERGENCY MODE OPERATION IN RESPONSE TO COVID-19

Focused on supporting countries' responses to COVID-19, ensuring coherent implementation of temporary recommendations issued by the World Health Organization, and avoiding unnecessary interference with international transport and trade.

With the emergence of COVID-19, EU HEALTHY GATEWAYS switched from operating in its inter-epidemic mode and activated its **emergency mode** in January 2020. The Joint Action continued operating in emergency mode until it concluded in April 2022.



### Ad-hoc working groups and expert network

The EU HEALTHY GATEWAYS agile network of experts was activated on 10 January 2020 and established an **ad-hoc working group** to monitor the “Wuhan pneumonia outbreak”. Since then, the Joint Action supported the European Commission’s DG SANTE, DG MOVE, the Health Security Committee and EU Member States during the COVID-19 response by rapidly developing technical guidance, providing expert opinions, consults and advice.

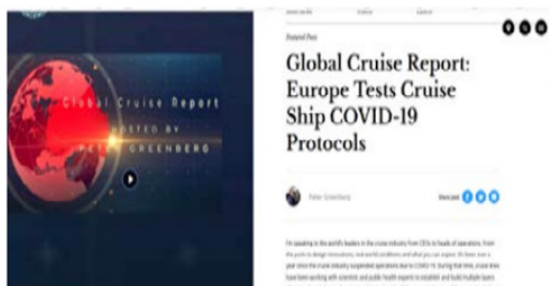
**Within 3 days** of receiving a European Commission request, EU HEALTHY GATEWAYS developed the first version of technical advice for **Preparedness and response to the outbreak of novel Coronavirus infection for ship and aircraft operators** on 23 January 2020.

EU HEALTHY GATEWAYS also supported in a timely manner the **transport industry to restart operations in 2020-2021**, as well as governmental authorities’ response actions at ports, airports and ground crossings. The Joint Action’s contribution to the pandemic has been globally acknowledged and recognized. During the pandemic, EU HEALTHY GATEWAYS participated in international panels with WHO, US CDC and other major organizations, as well as with the cruise industry, supporting attempts globally to deal with unprecedented challenges when responding to major COVID-19 events.

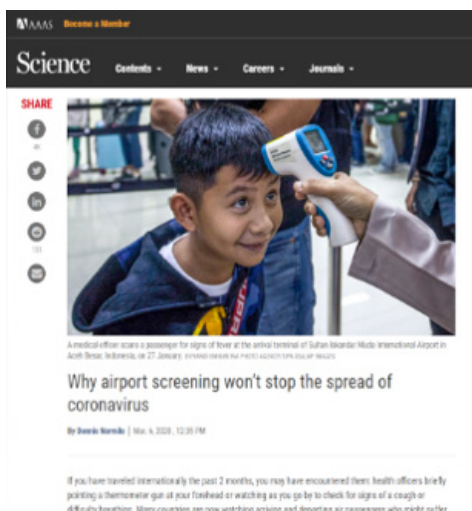
New York Times article<sup>19</sup> (March 2020) referencing EU HEALTHY GATEWAYS guidance for ship operators



EU HEALTHY GATEWAYS on series of episodes called “cruise views” by CLIA Global



Science<sup>20</sup> article referencing EU HEALTHY GATEWAYS guidance on exit/entry

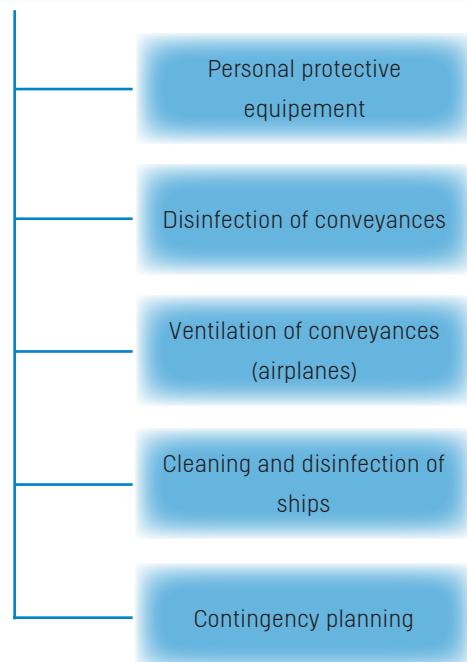


## EU HEALTHY GATEWAYS consults and site visits

The EU HEALTHY GATEWAYS **expert network conducted 3 site visits and short seminars** during the COVID-19 pandemic to ports of non-EU Member States to:

- Exchange experiences, practices and lessons learned during the pandemic
- Review existing port protocols, procedures and plans in relation to European guidance and EU HEALTHY GATEWAYS advice documents

Network provided **40+ consults** to EU & non-EU Member States related to COVID-19 and points of entry, including:



<sup>19</sup> <https://www.nytimes.com/2020/03/08/world/asia/coronavirus-cruise-ship.html>

<sup>20</sup> <https://www.science.org/doi/10.1126/science.367.6483.1177>

## COVID-19 advice and guidance documents

From the start of the COVID-19 pandemic, Joint Action working groups rapidly developed technical advice documents<sup>21</sup> for **all points of entry** and **all means of transport** within short time frames and with a limited evidence base for COVID-19.

### EU HEALTHY GATEWAYS COVID-19 advice documents:

- Over **15+** advice documents developed
- **Continuously updated** as new evidence emerges
- Selected documents translated in up to **4 national languages**
- Widely used as all advice documents combined were **downloaded over 50,000 times** from the EU HEALTHY GATEWAYS website (<https://www.healthygateways.eu/Novel-coronavirus#Interim>)
- **Referenced** in European Commission Guidelines<sup>22</sup>, World Health Organization interim guidance<sup>23</sup>, and transport industry associations

### Advice for COVID-19 preparedness and response targeting all point of entry types:

- Public health measures<sup>24</sup> at points of entry
- Exit and entry screening<sup>25</sup>
- Personal protective equipment<sup>26</sup> for travellers and personnel
- Restarting transport operations<sup>27</sup> to serve tourism
- Use of face masks<sup>28</sup> on board conveyances

### Advice for COVID-19 preparedness and response in the maritime transport sector

- Advice for ship operators<sup>29</sup>
- For suspended sailing and long-term docking of ships<sup>30</sup> during the pandemic
- Procedures for cleaning and disinfection of ships<sup>31</sup>
- Restarting cruise operations<sup>32</sup> in the context of COVID-19
- Restarting ferry operations<sup>33</sup> in the context of COVID-19
- Restarting river cruise ship operations<sup>34</sup> in the context of COVID-19
- Tool<sup>35</sup> for public health emergency contingency planning at ports



<sup>21</sup> <https://www.healthygateways.eu/Novel-coronavirus#Interim>

<sup>22</sup> [https://eur-lex.europa.eu/legal-content/EN/TXT/PDF/?uri=CELEX:52020XC0515\(04\)&from=EN](https://eur-lex.europa.eu/legal-content/EN/TXT/PDF/?uri=CELEX:52020XC0515(04)&from=EN)

<sup>23</sup> [https://www.who.int/publications/i/item/WHO-2019-nCoV-Non-passenger\\_ships-2021-1](https://www.who.int/publications/i/item/WHO-2019-nCoV-Non-passenger_ships-2021-1)

<sup>24</sup> [https://www.healthygateways.eu/Portals/0/plcdocs/EU\\_HEALTHY\\_GATEWAYS\\_COVID-19\\_EUMS\\_20\\_2\\_2020\\_FINAL.pdf?ver=2020-02-21-123658-243](https://www.healthygateways.eu/Portals/0/plcdocs/EU_HEALTHY_GATEWAYS_COVID-19_EUMS_20_2_2020_FINAL.pdf?ver=2020-02-21-123658-243)

<sup>25</sup> [https://www.healthygateways.eu/Portals/0/plcdocs/EU\\_HEALTHY\\_GATEWAYS\\_2019\\_nCoV\\_EUMS\\_E-E\\_screening\\_6\\_2\\_2020\\_V1b.pdf?ver=2020-02-11-094124-737](https://www.healthygateways.eu/Portals/0/plcdocs/EU_HEALTHY_GATEWAYS_2019_nCoV_EUMS_E-E_screening_6_2_2020_V1b.pdf?ver=2020-02-11-094124-737)

<sup>26</sup> [https://www.healthygateways.eu/Portals/0/plcdocs/EUHG\\_PPE\\_Overview\\_24\\_04\\_2020\\_F.pdf?ver=2020-05-20-201841-010](https://www.healthygateways.eu/Portals/0/plcdocs/EUHG_PPE_Overview_24_04_2020_F.pdf?ver=2020-05-20-201841-010)

<sup>27</sup> [https://www.healthygateways.eu/Portals/0/plcdocs/EU\\_HEALTHY\\_GATEWAYS\\_COVID-19\\_TRAVEL\\_SECTOR.pdf?ver=2020-05-16-081554-080](https://www.healthygateways.eu/Portals/0/plcdocs/EU_HEALTHY_GATEWAYS_COVID-19_TRAVEL_SECTOR.pdf?ver=2020-05-16-081554-080)

### Advice for COVID-19 preparedness and response in air transport sector

- Advice for aircraft operators<sup>36</sup>
- Considerations for implementing a common strategy for testing travellers at international airports<sup>37</sup>



### Advice for COVID-19 preparedness and response in ground crossings transport sector

- Advice for buses and bus stations<sup>38</sup>
- Advice for trains and rail stations<sup>39</sup>



<sup>28</sup> [https://www.healthygateways.eu/Portals/0/plcdocs/EUHG\\_PPE\\_Travellers\\_17\\_04\\_2020\\_F.pdf?ver=2020-04-23-140238-597](https://www.healthygateways.eu/Portals/0/plcdocs/EUHG_PPE_Travellers_17_04_2020_F.pdf?ver=2020-04-23-140238-597)

<sup>29</sup> [https://www.healthygateways.eu/Portals/0/plcdocs/EU\\_HEALTHY\\_GATEWAYS\\_COVID-19\\_MARITIME\\_CRUISE\\_17\\_9\\_2021\\_1.pdf?ver=2021-10-01-141254-650](https://www.healthygateways.eu/Portals/0/plcdocs/EU_HEALTHY_GATEWAYS_COVID-19_MARITIME_CRUISE_17_9_2021_1.pdf?ver=2021-10-01-141254-650)

<sup>30</sup> [https://www.healthygateways.eu/Portals/0/plcdocs/EU\\_HEALTHY\\_GATEWAYS\\_COVID-19\\_Stationed\\_ships\\_18\\_3\\_2020\\_F.pdf?ver=2020-03-20-183254-500](https://www.healthygateways.eu/Portals/0/plcdocs/EU_HEALTHY_GATEWAYS_COVID-19_Stationed_ships_18_3_2020_F.pdf?ver=2020-03-20-183254-500)

<sup>31</sup> [https://www.healthygateways.eu/Portals/0/plcdocs/EU\\_HEALTHY\\_GATEWAYS\\_COVID-19\\_Cleaning\\_Disinfection\\_ships\\_21\\_4\\_2020\\_F.pdf?ver=2020-05-07-113209-250](https://www.healthygateways.eu/Portals/0/plcdocs/EU_HEALTHY_GATEWAYS_COVID-19_Cleaning_Disinfection_ships_21_4_2020_F.pdf?ver=2020-05-07-113209-250)

<sup>32</sup> [https://www.healthygateways.eu/Portals/0/plcdocs/EU\\_HEALTHY\\_GATEWAYS\\_COVID-19\\_RESTARTING\\_CRUISES\\_2021\\_17\\_9\\_2021.pdf?ver=2021-09-17-131416-843](https://www.healthygateways.eu/Portals/0/plcdocs/EU_HEALTHY_GATEWAYS_COVID-19_RESTARTING_CRUISES_2021_17_9_2021.pdf?ver=2021-09-17-131416-843)

<sup>33</sup> [https://www.healthygateways.eu/Portals/0/plcdocs/Advice\\_Passenger\\_Ferry.pdf?ver=2021-06-08-142902-883](https://www.healthygateways.eu/Portals/0/plcdocs/Advice_Passenger_Ferry.pdf?ver=2021-06-08-142902-883)

<sup>34</sup> [https://www.healthygateways.eu/Portals/0/plcdocs/EU\\_HEALTHY\\_GATEWAYS\\_COVID-19\\_RESTARTING\\_INLAND\\_CRUISES.PDF?ver=2021-06-29-122347-310](https://www.healthygateways.eu/Portals/0/plcdocs/EU_HEALTHY_GATEWAYS_COVID-19_RESTARTING_INLAND_CRUISES.PDF?ver=2021-06-29-122347-310)

<sup>35</sup> <https://www.healthygateways.eu/Tool-for-contingency-plan-development-and-assessment-for-ports>

<sup>36</sup> [https://www.healthygateways.eu/Portals/0/plcdocs/EU\\_HEALTHY\\_GATEWAYS\\_2019-nCoV\\_AIRCRAFTS\\_4\\_2\\_2020\\_F.pdf?ver=2020-02-05-102326-010](https://www.healthygateways.eu/Portals/0/plcdocs/EU_HEALTHY_GATEWAYS_2019-nCoV_AIRCRAFTS_4_2_2020_F.pdf?ver=2020-02-05-102326-010)

<sup>37</sup> [https://www.healthygateways.eu/Portals/0/plcdocs/EU\\_HG\\_Report\\_COVID-19\\_Aviation\\_Lab\\_testing.pdf?ver=2020-10-23-154903-433](https://www.healthygateways.eu/Portals/0/plcdocs/EU_HG_Report_COVID-19_Aviation_Lab_testing.pdf?ver=2020-10-23-154903-433)

<sup>38</sup> [https://www.healthygateways.eu/Portals/0/plcdocs/EU\\_HEALTHY\\_GATEWAYS\\_COVID-19\\_Bus\\_Preliminary\\_4\\_3\\_V1\\_F.pdf?ver=2020-03-04-161818-293](https://www.healthygateways.eu/Portals/0/plcdocs/EU_HEALTHY_GATEWAYS_COVID-19_Bus_Preliminary_4_3_V1_F.pdf?ver=2020-03-04-161818-293)

<sup>39</sup> [https://www.healthygateways.eu/Portals/0/plcdocs/EU\\_HEALTHY\\_GATEWAYS\\_COVID-19\\_Rail\\_Preliminary\\_4\\_3\\_V1\\_F.pdf?ver=2020-03-04-161909-247](https://www.healthygateways.eu/Portals/0/plcdocs/EU_HEALTHY_GATEWAYS_COVID-19_Rail_Preliminary_4_3_V1_F.pdf?ver=2020-03-04-161909-247)

## EU digital Passenger Locator Form System (EUdPLF)

Passenger Locator Forms (PLFs) are used by public health authorities to facilitate **contact tracing** in case travelers are exposed to an infectious disease during their travel by means of transport. Information that travelers provide in PLFs can be used in destination countries to rapidly contact travelers, with the goal of protecting the health of travelers' and their contacts as well as preventing further disease spread.

In light of the COVID-19 pandemic, EU HEALTHY GATEWAYS developed a **web application<sup>40</sup> for an EU digital Passenger Locator Form (dPLF)** to facilitate the use of PLFs during cross-border health threats. The digital format allows for easier and more rapid data collection and exchange between stakeholders, making contact tracing more effective and efficient.

EUdPLF created a **single-entry point and database** for the collection of PLFs and covers **all transport modes**:

- Air transport
- Ground crossings (bus, train, car)
- Maritime transport (cruise, ferry)

From March 2021 to February 2022 under EUdPLF:

- Over **26 million** PLFs have been submitted
- Over **19 million** users of EU dPLF



Currently, **4 EU Member States** use the EU digital Passenger Locator Form (EUdPLF):

- Malta
- Italy
- Slovenia
- France

Additional EU Member States are transferring their national systems to the EU digital Passenger Locator Form

## COVID-19 studies, training and lessons learned

### Studies related to COVID-19

Using the EU HEALTHY GATEWAYS network, over 5 scientific publications<sup>41</sup> have been produced related to the COVID-19 pandemic and points of entry and means of transport.

Publications aimed to explore the experiences, challenges and needs of European points of entry and what has been learned from managing the COVID-19 outbreak at these points of entry.

A point of entry interview study<sup>42</sup> was conducted in 2020 to collect experiences on preparedness actions, response operations and best practices from the COVID-19 pandemic. 24 national and local professionals from ports, airports and ground crossings from 11 countries were interviewed.

**An airport organizational study** was conducted among 5 European airports to:

<sup>40</sup> <https://www.euplf.eu/web/index-2.html>

<sup>41</sup> <https://www.healthygateways.eu/Publications>

<sup>42</sup> [https://www.healthygateways.eu/Portals/0/plcdocs/210131\\_Factsheet\\_COVID\\_POE\\_InterviewStudy.pdf?ver=2021-02-01-152949-160](https://www.healthygateways.eu/Portals/0/plcdocs/210131_Factsheet_COVID_POE_InterviewStudy.pdf?ver=2021-02-01-152949-160)

- Understand in depth what effective inter-sectoral organization of COVID-19 response at airports entails
- Learn which factors contributed to European designated airports' successful approach in organizing the response to COVID-19

Past webinars available for play-back viewing.

More information here:

<https://www.healthygateways.eu/Core-work-packages/Training>

### COVID-19 training resources

Starting in February 2020, the EU HEALTHY GATEWAYS network of experts delivered several **webinars related to issues of COVID-19**, targeting professionals at points of entry and authorities in the transport sector.

EU HEALTHY GATEWAYS developed **online asynchronous training courses** focused on preparedness and response at points of entry in the context of COVID-19 in European Union (EU) and European Economic Area (EEA) Member States.

### COVID-19 focused in(tra)-action reviews at points of entry

As the EU HEALTHY GATEWAYS partners recognized that they could not wait until after the COVID-19 pandemic was over to conduct an in-depth analysis of their responses to COVID-19 at ports, airports and ground crossings, Joint Action partners decided to conduct **in(tra)-action reviews (IAR) focused on COVID-19**.

This tool is used to help countries:

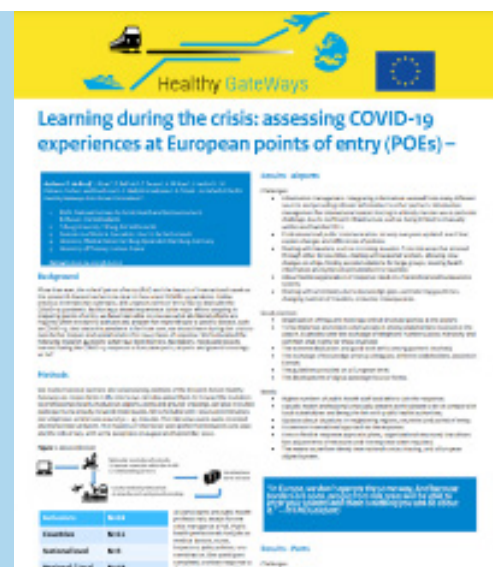
- Rapidly reflect on their public health responses to COVID-19
- Identify lessons learned and areas for improvement
- Enhance future responses in the ongoing COVID-19 pandemic and for other future emergencies

### COVID-19 focused IARs conducted by EU HEALTHY GATEWAYS

1. Netherlands (national level): COVID-19 public health response at ports
2. Netherlands (national level): COVID-19 public health response at airports
3. Greece (local level): COVID-19 events at local tourist port
4. European level meeting using IAR methodology to update EU HEALTHY GATEWAYS COVID-19 advice documents for cruise ships

### Lessons Learned

- Know the partners in crisis and how to reach them.
- Communication with the public is key because only simple measures were available
- European countries should align their policies and measures.
- A response plan never covers what will happen. It is of support, but everyone needs to keep thinking outside the box.
- Organizational memory during infection disease response is essential



## 5. IMPACT OF EU HEALTHY GATEWAYS AND THE WAY FORWARD

### Contributions to European public health preparedness and response

Past public health events and the current COVID-19 pandemic have shown the critical role points of entry including ports, airports and ground crossings play in the cross-border spread of disease. Given unprecedented challenges faced by public health authorities and the transport sector in responding to COVID-19, the importance of common protocols, procedures and coordinated action by Member States to improve their preparedness and response capacities at points of entry has been highlighted. Experiences and lessons learned during the pandemic must form the foundation of best practices and be used to improve preparedness and response capacities for future public health events.

The EU HEALTHY GATEWAYS Joint Action represents over a decade of work, that has brought together a diverse European network of experts specialized in transport public health. The value of the Joint Action's expert network and activities has been demonstrated during the COVID-19 pandemic, with the network immediately activating to support requests of the European Commission Directorates-General and Member States, in their response to COVID-19.

During the pandemic, EU HEALTHY GATEWAYS continued their cooperation at international level with both the World Health Organization (WHO) and the US Centers for Disease Control and Prevention (CDC),

participating in coordination meetings addressing travel, tourism and point of entry issues, and contributing to WHO trainings on COVID-19 response at points of entry.

### Supporting the successful restart of cruise ship operations in Europe

Throughout the pandemic, the Joint Action continually published evidence-based European guidance to meet the needs of public health authorities and transport operators based on the changing pandemic situation. At the start of the COVID-19 outbreak in January 2020, the Joint Action reacted rapidly by publishing advice for ship operators and health authorities, which were quickly updated to advise the disembarkation and quarantine of close contacts ashore; this update was published the very same day the Diamond Princess cruise ship docked at the port of Yokohama in Japan. Based on published evidence (data from October 2021), during the pandemic 53 cruise ships were identified with more than 3,200 confirmed COVID-19 cases on board, involving 83 deaths. Following the implementation of HEALTHY GATEWAYS advice, cruise operations in Europe were successfully re-started without major outbreaks.

The maritime transport industry has adopted the EU HEALTHY GATEWAYS advice documents for preparedness and response to COVID-19, beginning with the restart of their operations in 2020 and continuing into 2021. They have also promoted the implementation of EU HEALTHY GATEWAYS COVID-19

<sup>43</sup> <https://cruising.org/en-gb/events/2021/may/webinar-eu-healthy-gateways-update-interim-advice-for-cruise-ship-operations-and-operators>

<sup>44</sup> <https://medports.org/blog/2021/06/02/2nd-joint-webinar-with-the-medcruise-on-the-cruises-and-ferries-sectors-and-the-pandemic/>

advice for cruise ship operations and public health emergency contingency planning at ports, with CLIA Europe<sup>43</sup> (Cruise Lines International Association) and MedCruise<sup>44</sup> (The Association of Mediterranean Cruise Ports) organizing wide-reaching members to present HEALTHY GATEWAYS advice and support the restart of cruise ship activities. These webinars had a broad impact, with some reaching as many as 500 registered participants from nearly 30 European and 25 non-European countries.

### **Sustaining EU HEALTHY GATEWAYS results and activities into the future**

Considering the Joint Action's instrumental role before but particularly during the COVID-19 pandemic in guiding Member States' responses and restarting transport operations in 2020-2021 (especially in the maritime sector), EU HEALTHY GATEWAYS activities continue to build public health preparedness and response capacities.

### **Roadmap for the way forward**

The EU HEALTHY GATEWAYS General Assembly – consisting of all countries participating in the Joint Action – unanimously agreed it is essential that Joint Action activities and results are implemented, operated and maintained in both the short-term immediately after EU HEALTHY GATEWAYS ends, and over the long-term for integration of activities into national frameworks and at a European level.

Looking to the immediate and long-term future, the EU HEALTHY GATEWAYS consortium developed and agreed to a roadmap during Final General Assembly meeting (March 2022), outlining sustainability actions for the continuation of EU HEALTHY GATEWAYS activities.

## **ROADMAP FOR THE WAY FORWARD**

- **Updating existing guidelines developed by EU HEALTHY GATEWAYS**
- **Operating and maintaining web-based platforms and tools including the EU Common Ship Sanitation Database and European web-based network for Points of Entry**
- **Conducting hygiene inspections according to the European Manual for Hygiene Standards and Communicable Disease Surveillance on Passenger Ships**
- **Designing and conducting training activities for points of entry**
- **Designing and conducting tabletop/simulation exercises**
- **Memorandums of Understanding (MoU) for facilitating inter-sectorial cooperation**

The EU HEALTHY GATEWAYS General Assembly decided on the prioritization of sustainability efforts for immediate continuation of specific EU HEALTHY GATEWAYS activities such as (on the left).

To realize this, General Assembly members assigned the Public Health Observatory for Points of Entry and Means of Transport of the University of Thessaly (UTH) as the secretariat to continue EU HEALTHY GATEWAYS activities after the Joint Action concludes.

The roadmap decisions have also established sustainability actions to ensure political commitment at Ministerial level for long-term continuation of activities and to promote common EU HEALTHY GATEWAYS standards in public health aspects of points of entry.



# CONSORTIUM



## EU HEALTHY GATEWAYS CONSORTIUM

### PARTNERS / AFFILIATED ENTITIES

1. **Greece:** University of Thessaly (UTH) - Coordinator & WP lead
2. **Austria:** Federal Ministry of Social Affairs, Health, Care and Consumer Protection (MoH)
3. **Bosnia and Herzegovina:** Ministry of Civil Affairs (MoCA) & Ministry of Health (MoH-BA)
4. **Bulgaria:** Ministry of Health - Health Promotion and Diseases Prevention Directorate (MoH-HPDPD) & Regional Health Inspection Varna (RHI-Varna)
5. **Croatia:** Croatian Institute of Public Health (CIPH)
6. **Germany:** University Medical Center Hamburg-Eppendorf /Zentralinstitut für Arbeitsmedizin und Maritime Medizin / Institute for Occupational and Maritime Medicine (UKE) - WP 4 lead & WP 6 Co-lead
7. **Italy:** Ministry of Health (MINSAL) & Istituto Superiore di Sanità (ISS) - WP 3 lead
8. **Lithuania:** National Public Health Center (NVSC) - WP 5 Co-lead
9. **Malta:** Environmental Health Directorate - Ministry for Health (EHD)
10. **Moldova (Republic of):** National Center of Public Health (NCPH)
11. **Netherlands:** National Institute of Public Health and the Environment (RIVM) - WP 9 Co-lead
12. **Poland:** National Institute of Public Health - National Institute of Hygiene (NIPH-NIH) - WP 5 Co-lead
13. **Portugal:** Directorate-General of Health (DGS)
14. **Serbia:** Institute of Public Health of Republic of Serbia “Dr Milan Jovanovic Batut” (IPHS)
15. **Slovenia:** National Institute of Public Health (NIJZ) - WP 2 lead & WP 8 Co-lead
16. **Sweden:** Folkhälsomyndigheten, The Public Health Agency of Sweden (FOHM) - WP 6 Co-lead
17. **United Kingdom:** UK Health Security Agency (UKHSA) - WP 8 Co-lead

### EUROPEAN COLLABORATING STAKEHOLDERS

1. **Belgium:** Saniport Hoofdgeneesheer | DG GS - Soins de Santé (DG GS)
2. **Cyprus:** Ministry of Health (MoH)
3. **Denmark:** Centre of Maritime Health and Society, University of Southern Denmark (CMSS)
4. **Estonia:** Health Board (HB)
5. **Finland:** Ministry of Social Affairs and Health, Department for Promotion of Welfare and Health (HTO)
6. **Finland:** City of Porvoo, Environmental Health
7. **France:** Ministry of Health, Directorate General of Health, Surveillance and health security department (Ministère des Solidarités et de la Santé)
8. **Greece:** Laboratory of Hygiene and Epidemiology, Department of Public and Community Health, University of West Attica (UNIWA)
9. **Greece:** Benaki Phytopathological Institute, Department of Entomology and Agricultural Zoology (BPI)
10. **Ireland:** Health Service Executive (HSE)
11. **Latvia:** State Emergency Medical Service; Ministry of Health of the Republic of Latvia (SEMS)
12. **Norway:** Norwegian Directorate of Health Department of Community Health Care Services (DoH)
13. **Poland:** Chief Sanitary Inspectorate (GIS)
14. **Slovak Republic:** Public Health Authority of the Slovak Republic (PHA SK)
15. **Slovak Republic:** Ministry of Transport and Construction of the Slovak Republic (MINDOP SK)
16. **Spain:** Subdirección General de Sanidad Exterior, Ministerio de Sanidad, Servicios Sociales e Igualdad (MSSSI)
17. **Spain:** Centro Nacional de Epidemiología, Instituto de Salud Carlos III (ISCIII)
18. **Switzerland:** Swiss Federal Office of Public Health (FOHP)

### NON-EUROPEAN COLLABORATING STAKEHOLDER

19. Taiwan Centers for Disease Control (Taiwan CDC)

## EU HEALTHY GATEWAYS CONSORTIUM - sources

**UTH** - <https://epidem.med.uth.gr/?lang=en>  
**MoH** - <https://www.sozialministerium.at>  
**MoCA** - <http://www.mcp.gov.ba/home/language>  
**MoH-BA** - <http://www.fmoh.gov.ba>  
**MoH-HPDPD** - <https://www.mh.government.bg/bg/>  
**CIPH** - <https://www.hzjz.hr>  
**UKE** - <https://www.uke.de/kliniken-institute/institute/universitätsprofessur-für-arbeitsmedizin/>  
**MINSAL** - <https://www.salute.gov.it/portale/home.html>  
**ISS** - <https://www.iss.it>  
**NVSC** - <https://nvsc.lrv.lt>  
**EHD** - <https://deputyprimeminister.gov.mt/en/Pages/health.aspx>  
**NCPH** - <https://cnspl.md>  
**RIVM** - <https://www.rivm.nl/en/about-rivm/organisation/national-coordination-centre-for-communicable-disease-control>  
**NIPH-NIH** - <https://www.pzh.gov.pl/enteroagregacyjne-e-coli-eaec-identyfikacja-pcr/>  
**DGS** - <https://www.dgs.pt>  
**IPHS** - <https://www.batut.org.rs>  
**NIJZ** - <https://www.nijz.si>  
**FOHM** - <https://www.folkhalsomyndigheten.se>  
**UKHSA** - <https://www.gov.uk/government/organisations/uk-health-security-agency>  
**DG GS** - [https://www.health.belgium.be/language\\_selection?destination=%3Cfront%3E](https://www.health.belgium.be/language_selection?destination=%3Cfront%3E)  
**MoH** - [https://www.moh.gov.cy/moh/moh.nsf/index\\_gr/index\\_gr?OpenDocument](https://www.moh.gov.cy/moh/moh.nsf/index_gr/index_gr?OpenDocument)  
**CMSS** - <https://www.sdu.dk/da/ist/cmss>  
**HB** - <https://www.terviseamet.ee/et>  
**City of Porvoo, Environmental Health** - <https://www.visitporvoo.fi/health-services>  
**Ministère des Solidarités et de la Santé** - <https://www.social-sante.gouv.fr>  
**UNIWA** - <https://www.uniwa.gr/pch/>  
**BPI** - <https://en.bpi.gr>  
**HSE** - <https://www.hse.ie/eng/>  
**SEMS** - <https://www.vsm.gov.lv/lv>  
**GIS** - <https://www.gov.pl/web/gis>  
**PHA SK** - <https://www.uvzsr.sk/en/>  
**MINDOP SK** - <https://www.mindop.sk/en>  
**MSSSI** - <http://www.msssi.gob.es>  
**ISCIII** - <https://www.isciii.es/ISCIII/>  
**FOHP** - <https://www.bag.admin.ch/bag/de/home.html>  
**Taiwan CDC** - <https://www.cdc.gov.tw>

## CONTACT

---

**Email:** [info@healthygateways.eu](mailto:info@healthygateways.eu)

**Website:** [www.healthygateways.eu](http://www.healthygateways.eu)

**Tel:** +30 2410 565055

**Fax:** +30 2410 565051

The EU HEALTHY GATEWAYS Joint Action has received funding  
from the European Union, in the framework of the Health  
Programme 2014-2020

---

DISCLAIMER NOTE: "The content of this report represents the views of the author only and is his/her sole responsibility; it cannot be considered to reflect the views of the European Commission and/or the Health and Digital Executive Agency (HaDEA) or any other body of the European Union. The European Commission and the Agency do not accept any responsibility for use that may be made of the information it contains."